

**SIX ORPHANED PUPS SAFE
AT HOME THANKS TO YOU**

Learn how your support helped us
be a safety net for this litter.

Page 4



2024 IMPACT REPORT

A year of rescue, compassion, and community

♥ [Click here to donate and support more homeless animals](#)



New Hampshire Society for the Prevention of Cruelty to Animals

104 Portsmouth Avenue, PO Box 196, Stratham, NH 03885
T: (603) 772-2921 | F: (603) 778-7804 | nhspca.org

BOARD OF DIRECTORS

Chairman: Robert Span, Esq.
Vice Chairman: John MacGregor, DVM, DACVIM
Secretary: Sue Smulski
Treasurer: Michael J. Murphy, CPA

DIRECTORS AT LARGE

Wildolfo Arvelo, David F. Choate,
Alison Clode, DVM, DACVO, Brian Gibb,
Steven Bernitz, Monica A. McCarthy, CFA, CDFA, CPWA,
Philip Perham, Bill Richard

NEW HAMPSHIRE SPCA LEADERSHIP

President & CEO: Lisa S. Dennison, M.S.

DEVELOPMENT & MARKETING

Senior VP of Philanthropy: Sheila E. Ryan
Annual Fund Manager: Rich Hegarty
Special Events & Sponsorship Manager: Julie Halama
Communications Manager: Melissa Mower

FINANCE & HUMAN RESOURCES

VP of Finance & Human Resources: Mary Baker

LEARNING CENTER

VP of Operations & Programs: Brianne Wood
Manager of Humane Education Programs: Tracy Ritzo
Manager of Behavior & Training: Kelley Corson
Facilities Manager: Jeremy Wellman

ADOPTION & VETERINARY CENTERS

VP of Animal & Veterinary Services: Savannah Alcerro, MPA
Director of Animal Services: Kelly Marinel
Manager of Adoption Programs: Dianna Currier
Equine & Farm Program Manager: Michelle Murch
Medical Director: Dr. Carly LaGrandeur, DVM
Clinic Manager: Felicia LeBlanc



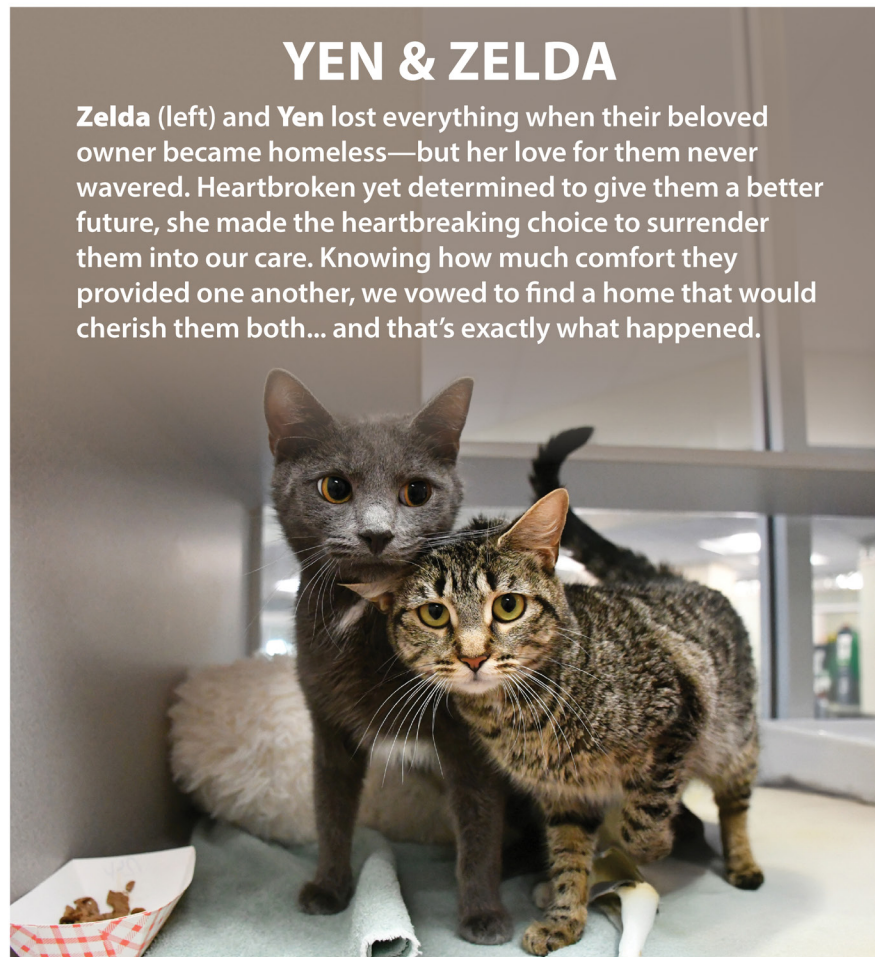
The New Hampshire SPCA is a four-star (the highest possible rating) animal welfare charity in the state of New Hampshire.



Ana was just one of 1,261 animals transported to the New Hampshire SPCA from overcrowded, underfunded shelters in 2024.

▶ WHAT'S INSIDE

Incoming Animals.....	5
Transport Program	6
In-Care Statistics	7-8
Outgoing Animals	9
Helping Those in Need	10-11
Learning Together	12
Community Outreach	13
Volunteer Program	14
FY24 Financial Summary.....	15
1872 Society	16-19



YEN & ZELDA

Zelda (left) and Yen lost everything when their beloved owner became homeless—but her love for them never wavered. Heartbroken yet determined to give them a better future, she made the heartbreaking choice to surrender them into our care. Knowing how much comfort they provided one another, we vowed to find a home that would cherish them both... and that's exactly what happened.

Dear Friends and Supporters,

This year's Impact Report highlights record numbers of adoptions, surgeries, expanded programs and larger safety net programs for the pet loving members of our community. More animals were helped with basic needs, lifesaving medical care and transformative rehabilitation.

We provided support to thousands of owners who wanted to provide important care and treatments for their beloved pets. We assisted those who made difficult decisions for their pets, perhaps surrendering or aiding when they were at end of life and unable to provide that care any other way.

We worked with children learning some of life's most important lessons—those of compassion and service. Others learned technical skills in our kennels, medical treatment rooms, labs and surgical suites. Teaching and giving back to the next generation brings full circle the gifts you give us to make these programs possible.

In partnership with each of you, we made a tremendous impact both here on our campus and across the country as we assisted numerous agencies with critical lifesaving needs. At times this assistance was through a transfer of cats or dogs, and at other times it involved providing assistance after critical rescues. At times, we were the ones appreciating reciprocal support when we had more than we could safely house or rehome in a short time. When we received more than 800 mice, our sister shelters generously opened their doors to assist and incredible volunteers drove throughout New England delivering our smallest residents, worthy of a better chance with new families.

The circle of compassion is large and broad, interweaving continuously as we work together to improve the lives and outcomes of thousands and thousands of animals and people who love them.

As 2025 unfolds, we envision reaching further into the community to provide assistance where it may not exist. We hope to continue to reach out and provide greater access to veterinary care, helping those who are unable to travel to us but are just as passionate about caring for the family's pet. We will advocate for expanded awareness of recently



enacted laws that protect animals and continue to provide more accessible learning opportunities. We will work to find more ways to help our community in a manner that benefits people and animals every step of the way. Additionally, we will continue to expand our transfer partners, helping more animals that may linger due to age, condition and more.

We have you, our most amazing community, who works with us in a magnitude of ways to enrich our programs and services, who believe in the lifesaving and educational work that we do.

You respond and assist when we need you and we cannot thank you enough for everything you have done and continue to do to change the lives of thousands of animals and people each year.

As we expand our reach and continue to provide transformative programs, we know you will be with us throughout the journey. For this, we are truly and forever grateful~

On behalf of all the animals and people supported both near and far, thank you.

Lisa S. Dennison, M.S.
President & CEO

► FROM THE COVER

How you helped six orphaned pups find their happily ever after

In October, we received an urgent call from a local shelter in desperate need of help. They had taken in six tiny puppies who had been tragically separated from their mama when she passed away. The shelter knew these fragile pups needed more care than they could provide, but they were unable to find foster families. We knew we had to step in. Thanks to our incredible foster network, we were ready to give these little ones the love and care they deserved.

Within an hour of arriving at the New Hampshire SPCA, all six pups (Brickle, Natty, Ollie, Presley, Rooster and Sky) were placed with foster families prepared to provide round-the-clock care. At just three weeks old, this was a critical stage for their socialization and development. To give them the best chance at thriving, we split the litter into two groups of three—ensuring they could grow, play, and learn with their siblings while still receiving plenty of individual attention.

Their foster families embraced the challenge with open hearts, feeding the pups four times a day, monitoring their weights, cleaning up countless messes, and, of course, showering them with love.

Over the next several weeks, we



When **Natty, Presley and Brickle** (pictured) and their siblings **Ollie, Sky and Rooster** (on the cover) tragically lost their mama, they needed our help. Thanks to friends like you, we were able to be here for them.

watched these once-vulnerable puppies grow into healthy, playful bundles of joy. They were spayed/neutered, vaccinated, microchipped, and received their final medical checkups with our veterinary team.

Finally, the day we had all been waiting for arrived: their adoption day! It didn't take long for each puppy to find a loving home, and today, they are safe, cherished and thriving with their new families.

It's because of your compassion and unwavering support that we can say "Yes!" when animals like these

puppies need us most. You help us be a safety net not only for local animals in need, but also for those in overcrowded, underfunded shelters across the country. Together, we're giving them the second chances they deserve.

As you read through this Impact Report, we encourage you to remember that none of this work is possible without friends like you.

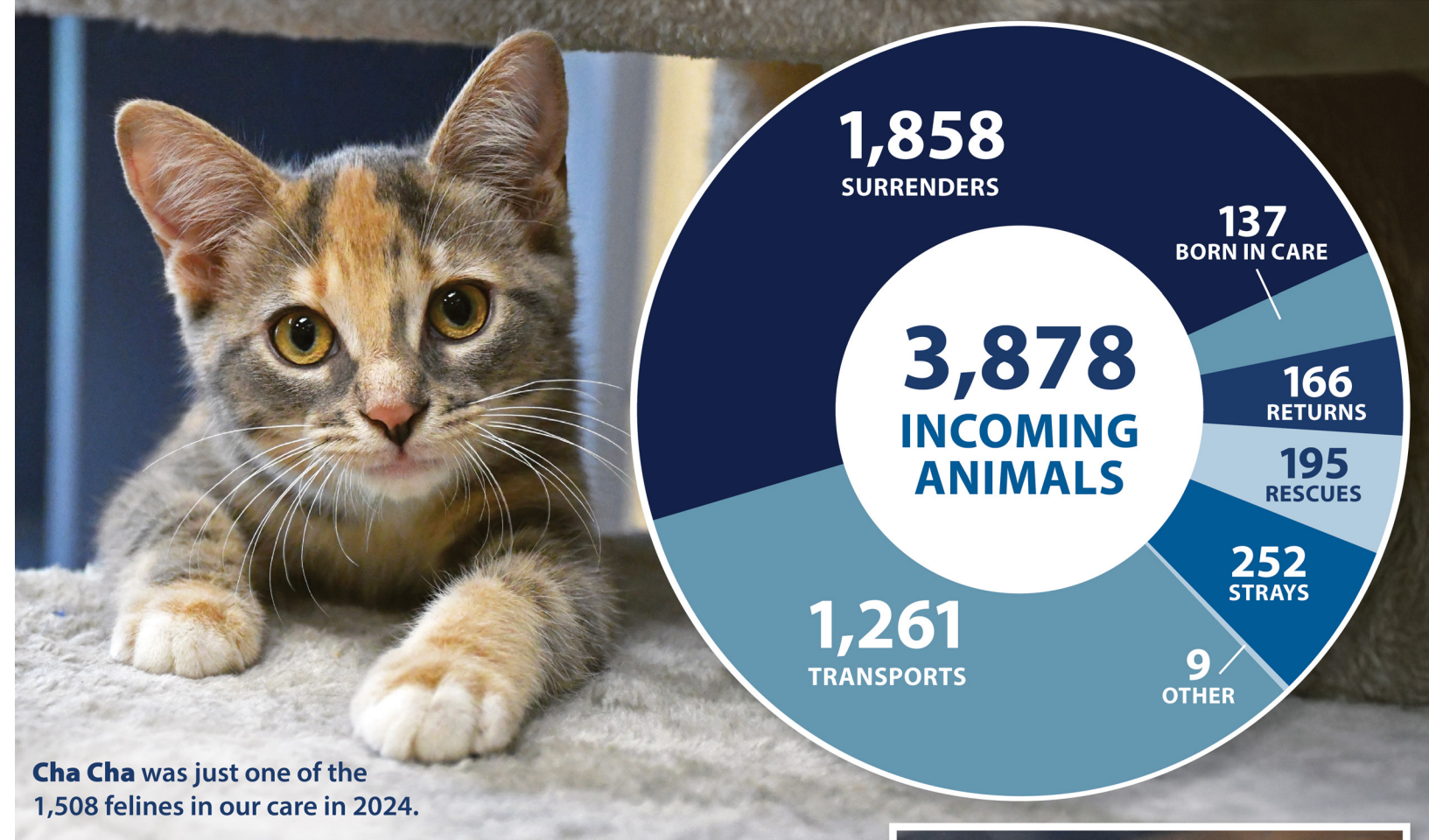
Thank you for your hand in this record-breaking year. The animals, and all of us who care for them, are so grateful.



DAFFY & SAM

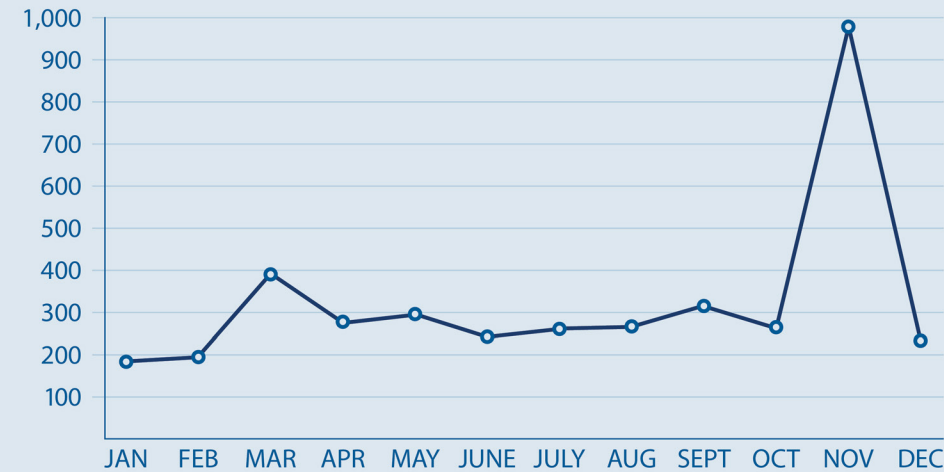
When **Daffy**, 20, arrived at the NHSPCA, she was painfully thin and terrified of human touch—clear signs of past mistreatment. We soon realized she wasn't just protecting herself, but also a baby she was carrying. With patience, care, and plenty of treats, our team helped Daffy heal, both physically and emotionally. Her baby, **Sam**, was born in April. Once it was appropriate to wean Sam, both of these deserving girls were adopted by kind, loving families.

INCOMING ANIMALS



Cha Cha was just one of the 1,508 felines in our care in 2024.

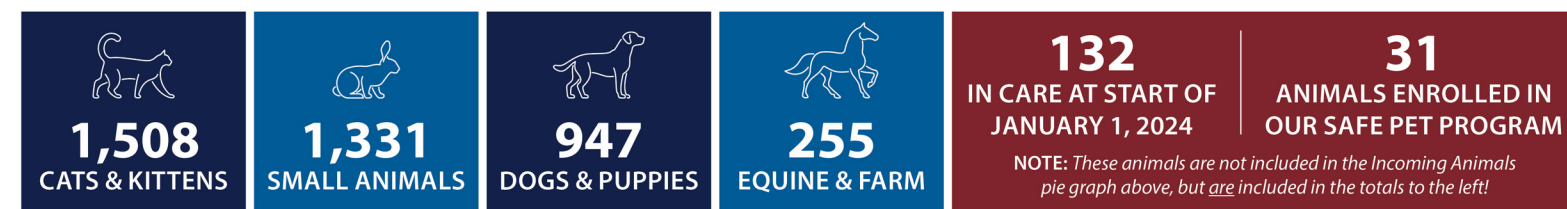
INTAKE BY MONTH



A BUSY NOVEMBER

In November, a local resident came to our Adoption Center, overwhelmed by the number of pet mice in his care. What he first estimated to be 150 turned out to be nearly 1,000. Thanks to adoption and transport efforts, we've found loving homes for most of these tiny friends.

ALL ANIMALS IN OUR CARE DURING 2024



▶ TRANSPORT HIGHLIGHT



The adventures of Adele and Po

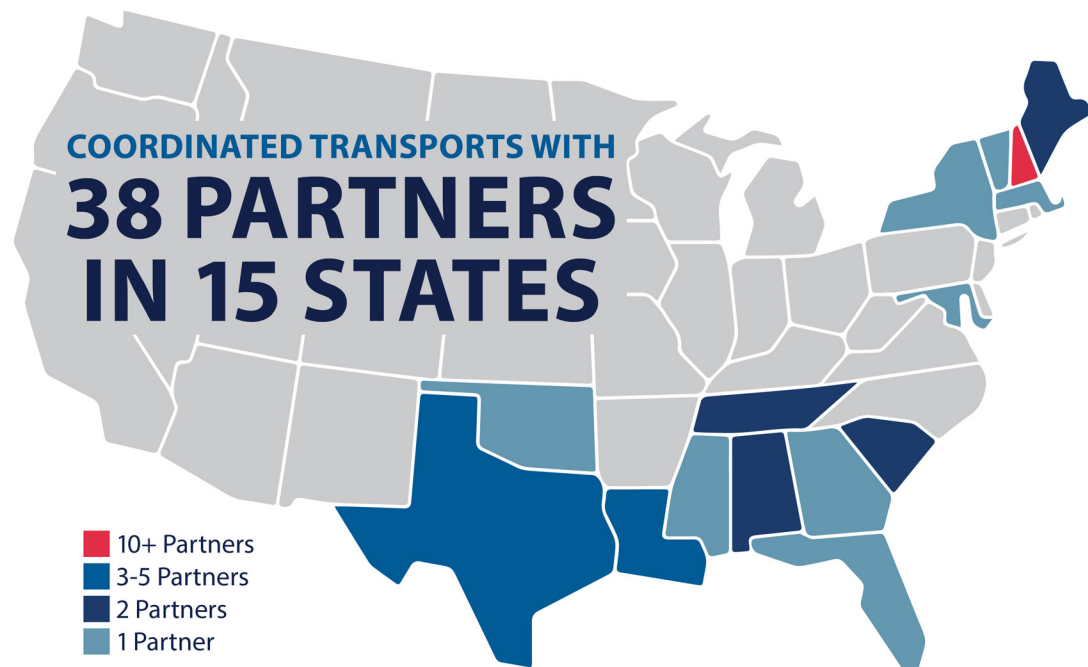
We are incredibly grateful that sweet-as-pie **Adele**, 6, ended up here with us. In October, Adele made the 30-hour trip from Texas in hopes of finding a safe and loving home in New England.

Upon her arrival, our veterinary team noticed a couple concerning things: she had multiple fractured teeth and what we initially thought was a mass in her abdomen.

Committed to improving Adele's quality of life, our team performed a dental surgery, removing 13 affected teeth... and discovered that the "mass" in question was actually... a puppy!

Knowing how stressful shelter life can be on pregnant animals, we found a lovely foster family that was willing to step up and provide her care through birth and until her pup, **Po**, was weaned.

When the time came, her foster family decided they couldn't bear to part with either dog. They adopted the mom-and-son duo and send us frequent updates of them running alongside the waves on the beach, snuggling, and simply—*finally*—enjoying life.



618 CATS & KITTENS



557 DOGS & PUPPIES



70 SMALL ANIMALS



16 HORSES

1,261 ANIMALS TRANSPORTED TO THE NEW HAMPSHIRE SPCA VIA **75 TRANSPORTS**

With overcrowded, underfunded shelters and limited access to spay/neuter programs, many animals in the South have little chance of adoption—making transport to New England a critical lifeline.



In July, we were asked to help a shelter in Mississippi that had rescued dozens of black cats. Due to Black Cat Syndrome, these felines were being overlooked by adopters in favor of those with lighter coats. **Zippy**, one of the 30 black cats on the transport, had spent an entire year in a shelter waiting for her chance. She was adopted within two hours of being available at the New Hampshire SPCA.

Animals like Annie desperately need us

Before arriving in New Hampshire, Annie spent more than a year in one of the most overcrowded, underfunded shelters in the country: St. Landry's Parish in Louisiana.

As a black, heartworm-positive pitbull mix, Annie's chances of survival were incredibly slim; however, the staff at the shelter in Louisiana—who was completely smitten with this gentle girl—refused to give up on her.

They rallied and raised the funds to cover her heartworm treatment, gave her as much love as they could, and fought relentlessly to keep her off the euthanasia list. We are so glad they did.

When we heard Annie's story, we knew we had to help. Once she was heartworm-free, we transported her to

the New Hampshire SPCA, where she quickly stole the hearts of our staff and volunteers alike.

A single post about her sparked a frenzy on social media. The next morning, there was a line of eager adopters waiting at our door. The first in line didn't have landlord approval yet, but she stayed with Annie *all* day, determined to be the one lucky enough to adopt her.

The next morning, approval in hand, she was waiting at our door right as we opened, ready to take her girl home.

Thanks to you and your support, we were able to rescue Annie from an unfair fate. Her long and miraculous journey ended exactly as it should—with a loving family of her own.



We have changed Annie's name to Bailey, which she picked up quickly. **We absolutely adore her. She is one spoiled dog. We could not have asked for a more perfect companion!**

We enjoy lots of snuggles, she gets along with the cats, and we are in the process of adopting a brother for her! It's hard to get photos of her because she loves to come close and lick us!

— Bailey's Family

LENGTH OF STAY (LOS) STATISTICS

The **average length of stay** is the time animals spend at the shelter from the moment they are brought in until they are adopted. The **median length of stay** represents how many days a typical animal spends at the shelter.

Animal Type	Number of Animals	Adopted	Return to Owner	Average LOS	Median LOS
Dog	596	469	74	13	7
Puppy	333	320	0	10	7
Cat	846	735	54	14	8
Kitten	637	611	4	15	7
Rodent	923	401	0	19	5
Bird/Other	156	145	0	60	66
Horse	96	72	6	88	36
Rabbit	93	86	1	37	17
Farm Fowl	51	49	0	62	22
Guinea Pig	57	55	0	43	21
Farm Animal	90	52	0	64	71
TOTAL	3,878	2,995	139		



Stormi was one of 93 rabbits we cared for in 2024. Our intake of rabbits has been steadily increasing over the past five years... as have rabbit adoptions.

IN-CARE STATISTICS

OUTGOING ANIMALS

SHELTER ANIMAL VETERINARY CARE



13-year-old **Greta**, pictured here with Dr. Carly LaGrandeur, DVM during her exam, was found tied to a pole with a bag of cat food and a sign that read, "My owner is no longer able to care for me. Please help!"



Griffin was part of a record-breaking year for the Equine & Farm Animal Program. He and 71 other horses were adopted in 2024.

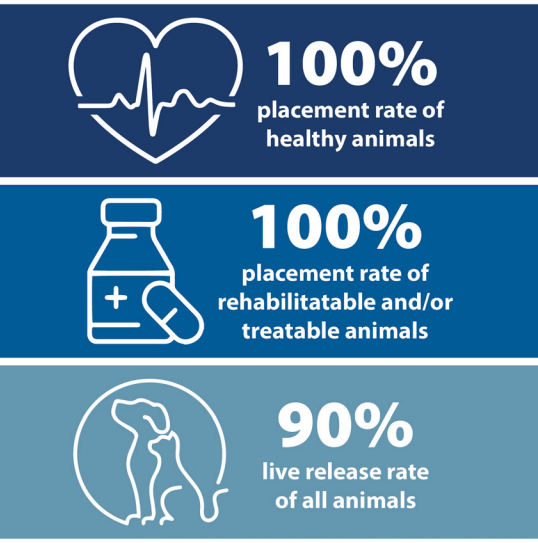
Elevating veterinary care for both shelter and community animals

Imagine the impact of over 16,000 veterinary treatments. Our Veterinary team completed a total of 16,246 treatments of animals in our care during 2024. That equates to an average of more than four treatments per animal. However, that is not how shelter medicine works. There are no averages that truly make sense. Some of the lucky animals come in and with just a simple health check get to find their new family quickly and without taking a beat. Then there are those that need a few things, maybe updated vaccines, or medication for a respiratory infection or treatment for flea infestation. These animals receive the care they need quickly and if all goes well, they are ready for the adoption floor within a week or two. Next stop for them is their new family's couch and all the love they need.



able to provide the interventions that each animal needs to achieve the best possible outcomes.

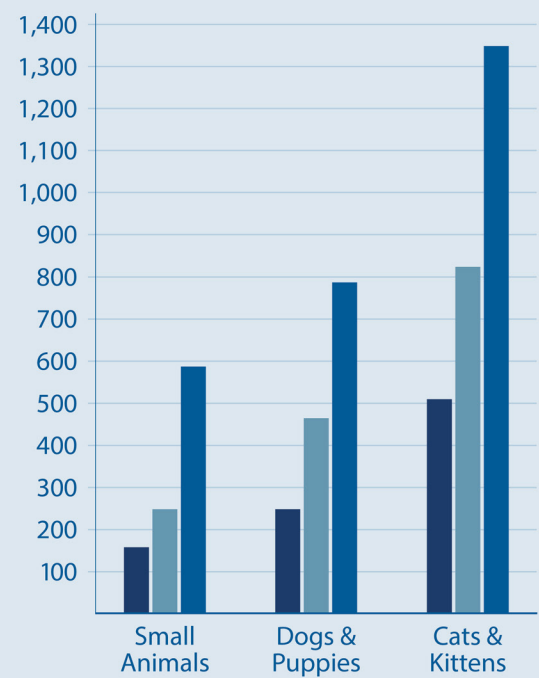
As we look forward to 2025, we anticipate being able to continue to improve care for in-house animals while further developing our veterinary care for owned animals. When the Veterinary Center was completed in 2023, we began a steady strategy to roll out these services and by 2024, we were offering weekly spay/neuter days for cats and dogs, wellness vaccinations, and on a case-by-case basis, other medical care for those who were unable to provide it without assistance. 2025 will bring more availability of services for animal owners both here at our Veterinary Center and in the community provided by our NHSPCA C.A.R.E.S program. We are so grateful to increase these important safety net services.



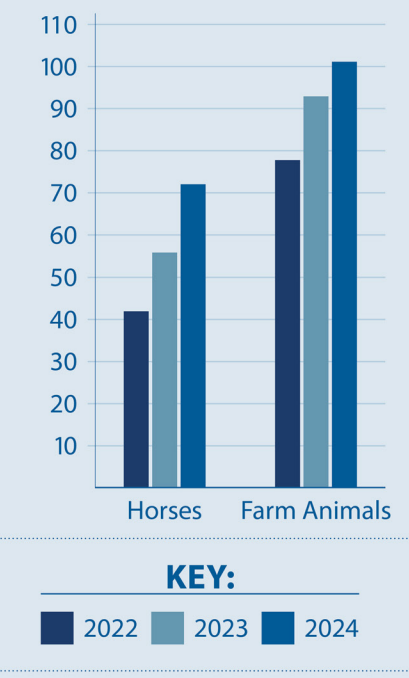
Mama was just one of 45 senior cats adopted in 2024.

THREE-YEAR ADOPTION COMPARISON

INDOOR COMPANION ANIMALS



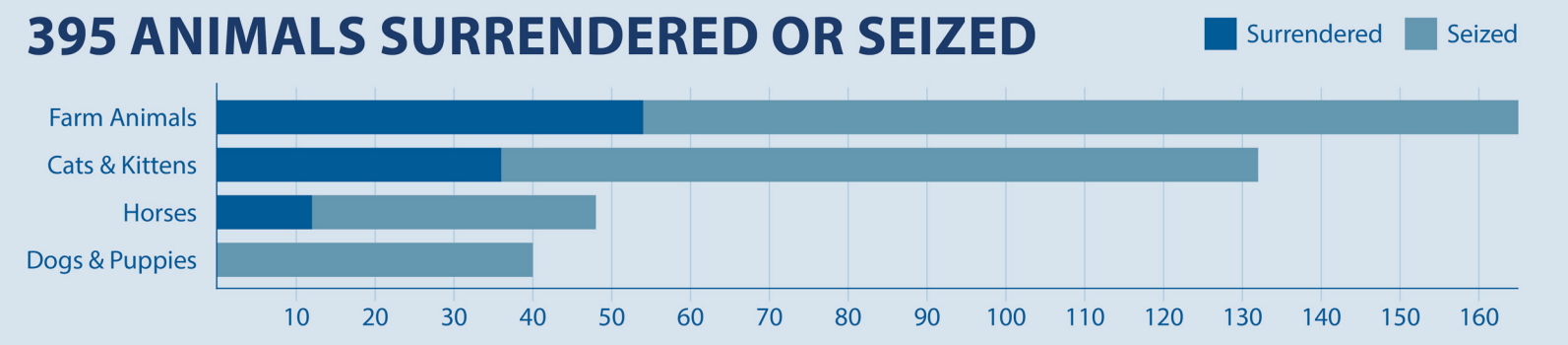
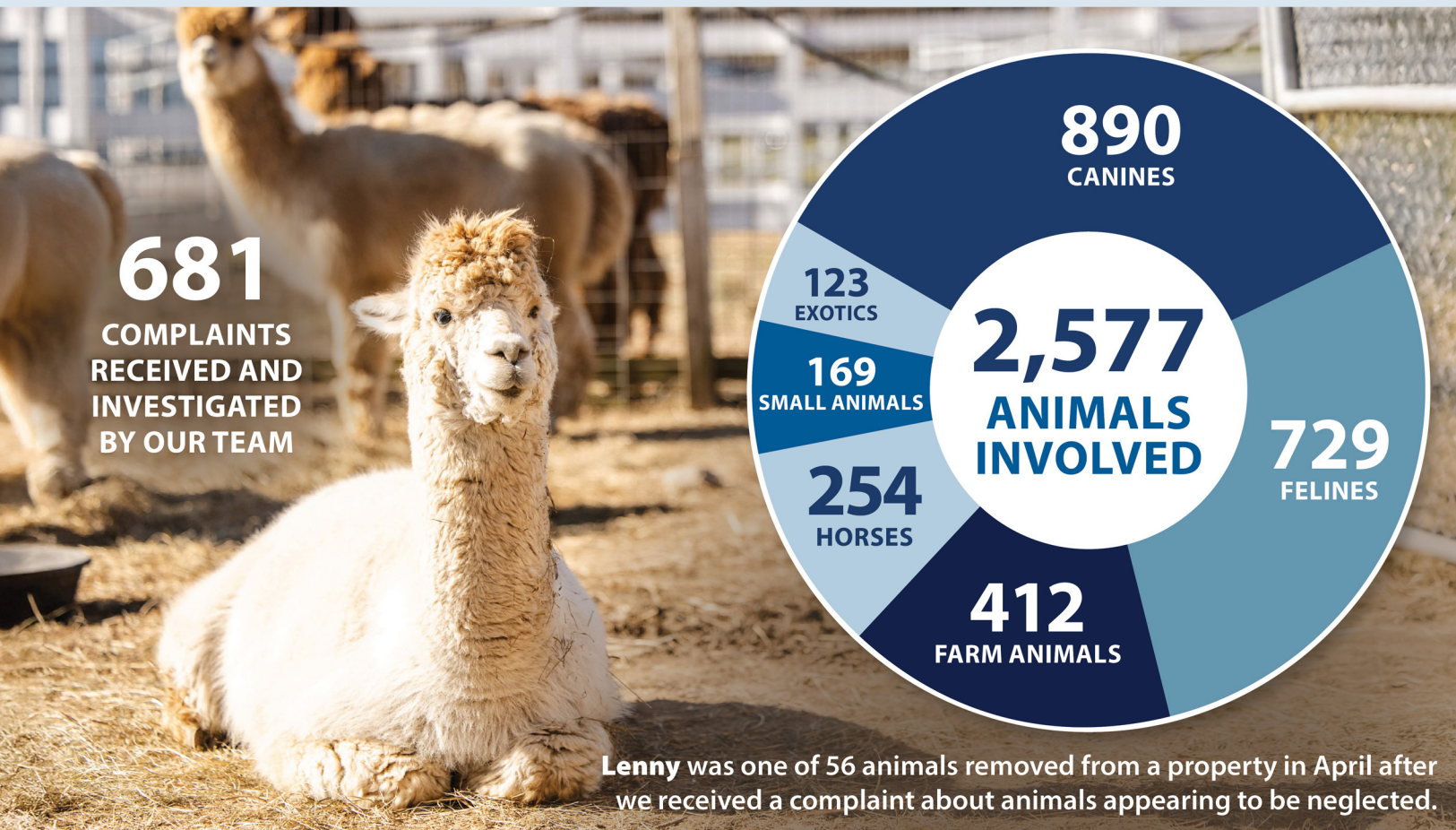
EQUINE & FARM ANIMALS



KEY:
2022 2023 2024

HELPING THOSE IN NEED

RESPONSE TO CRUELTY & NEGLECT COMPLAINTS



SAFE PET PROGRAM

This program provides free housing for pets (for an initial period of two weeks) for members of our community who are dealing with difficult circumstances. It allows them to deal with whatever is happening with peace of mind knowing their animal(s) will be safe.

31 ANIMALS
ENROLLED IN THIS PROGRAM FOR A TOTAL OF
804 SAFE NIGHTS

- TOP REASONS FOR USE OF THIS PROGRAM
- HOMELESSNESS
 - DOMESTIC VIOLENCE
 - HOSPITAL STAY

Being a lifeline for those who need us

The New Hampshire SPCA was founded in 1872 on a profound mission, to stop cruelty to animals, especially 'beasts of burden' that were regularly worked to collapse or whipped until they bled. Over the years, while maintaining our protection of equines, the mission expanded to include small animals, from dogs and cats to rabbits, birds, farm fowl and even pet mice.

One hundred fifty-three years have passed since then, but we are regularly faced with the reality that cruelty and neglect are still inflicted upon innocent animals around this country, and here in New Hampshire.

There are statutes in state law that define what cruelty to animals is (RSA 644:8), what constitutes neglect, etc. But to break it down in relatable terms, we think of cruelty to animals as having clear intent to abuse, hurt or kill an animal with malice.

Neglect is a broader term and can be a sort 'catch all' in which treatment of animals can be cruel, but the perpetrator isn't intentionally inflicting malicious harm. An example of this might be a horse owner who no longer provides food or water, or trims hooves. The result of starvation or illness is painful and is often devastating. This is considered neglect because the owner didn't set out to starve their horse, but the result is the same. It is a truly fine line.

As you can see on the opposite page, in 2024, 395 animals were either surrendered or seized in reported cases of cruelty or neglect. There were 681 reports that involved 2,577 animals.

Many reports are resolved with the education of owners on adequate feeding, shelter, medical care, etc. Sometimes, we find that an animal is receiving appropriate care, but the condition of their animal suggests otherwise to a concerned bystander. An example of this might be a very old horse who looks very skinny.



Whether the rescue is of horses, dogs, cats or even mice, our team is fully committed to being there for the animals in our community who need us.

Upon investigation, we find that the owner has the horse under vet care and is doing all that they can as the horse is nearing the end of life.

Just one of the many cases of neglect that we handled this year was the case of 56 animals that came from one location. The case involved extensive neglect of 20 cats, 12 dogs, 18 farm fowl, six alpaca and two goats. Many of the animals were determined by a veterinarian to be severely underweight, they had no food and undrinkable mud rather than water. The cats were suffering with upper respiratory, ear and eye infections, the dogs were in crates too small or crowded. The farm animals and fowl were either sick, too crowded or not receiving treatment or care. It was horrible to see so many innocent animals being disregarded by the ones who were supposed to care the most.

Another case of neglect were horses that came to us so malnourished that their spines, hips and neck bones protruded. Some could barely walk as their depleted muscles could hardly hold them up.

Then there are the cases where an owner's overwhelm is what results in terrible conditions for the animals. One such case in 2024 were dozens of unaltered cats living in a

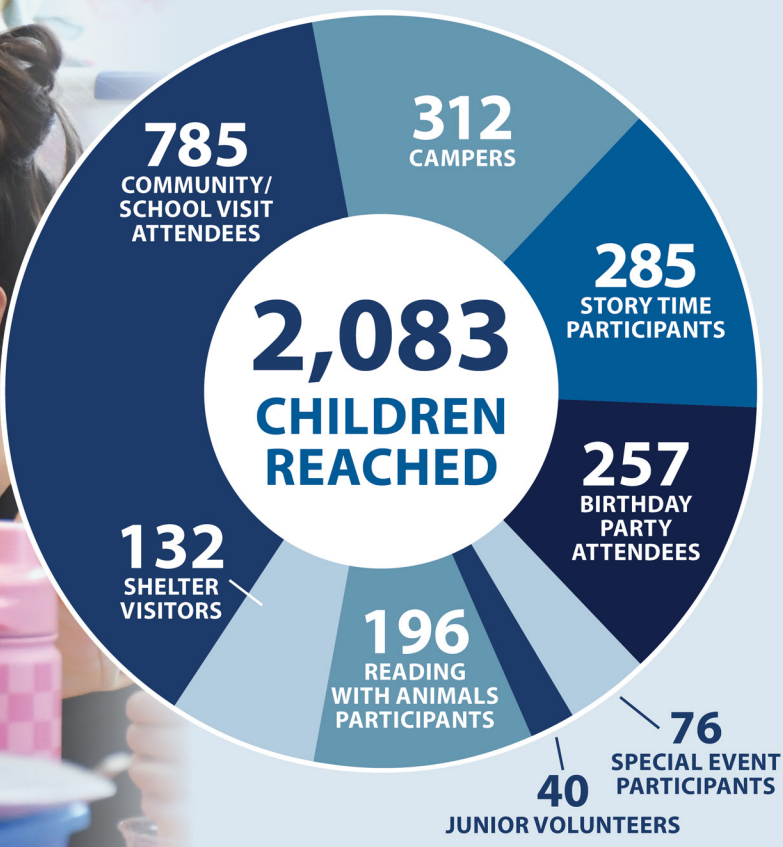
dilapidated home with their owner who loved them. But, with more than 30 cats, they could not feed, water or care for them all, leaving the cats and people living in filthy conditions with an ammonia level well beyond what is considered acceptable or healthy—for animals or their people.

There was also the case of more than 800 pet mice and rats that was heavily covered in the news. The owners lost control of the constant reproducing and found themselves in a huge mess, turning to the NHSPCA for help.

Our humane agents and animal care staff are here because they care deeply about the wellbeing of animals in our community. We are here when the police need us to help them, or when a concerned neighbor reports a suspicion of mistreatment. We respond in the hottest heat of the summer and the coldest chill of winter. We are here for the animals when no one else is, and we do so gratefully and with pride, knowing that our supporters want us to save animals from harm. We know this work matters and makes lifesaving change for each and every animal we reach.

Thank you for making our work possible.

HUMANE EDUCATION



It's one of our greatest honors to work with the next generation of animal lovers and advocates.

BEHAVIOR & TRAINING

1,048 DOGS

PARTICIPATED IN THESE PROGRAMS:



Training can keep dogs like **Little Foot** from being surrendered due to undesirable, but correctable, behaviors.



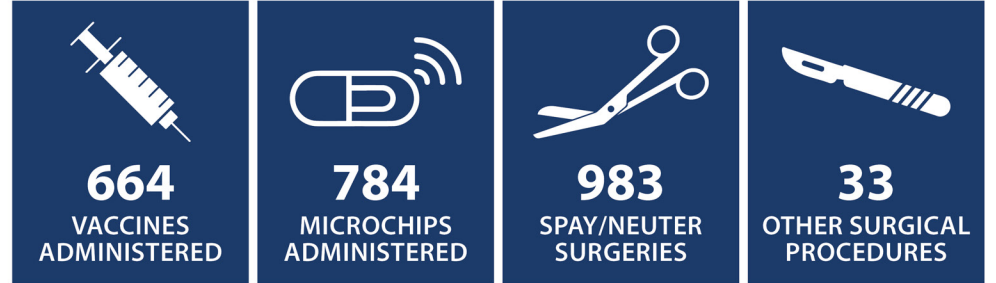
We're committed to helping members of our community with low-cost spay/neuter and rabies vaccine clinics.

FOOD SHARE PROGRAM

Our Food Share Program helps pet owners facing financial hardship by providing pet food assistance, ensuring they can keep their beloved animals.

9,956 POUNDS
OF PET FOOD DISTRIBUTED
THROUGHOUT OUR COMMUNITY,
EQUALING AN ESTIMATED
49,780 MEALS

COMMUNITY VETERINARY CARE



ALZHEIMER'S CAFÉ

Our Alzheimer's Café is a welcoming space for individuals with Alzheimer's, dementia, or memory challenges and their caregivers to visit with animals.

258 GUESTS
ATTENDED ONE OF OUR 11 CAFÉS

Making our Humane Ed programs accessible to more children



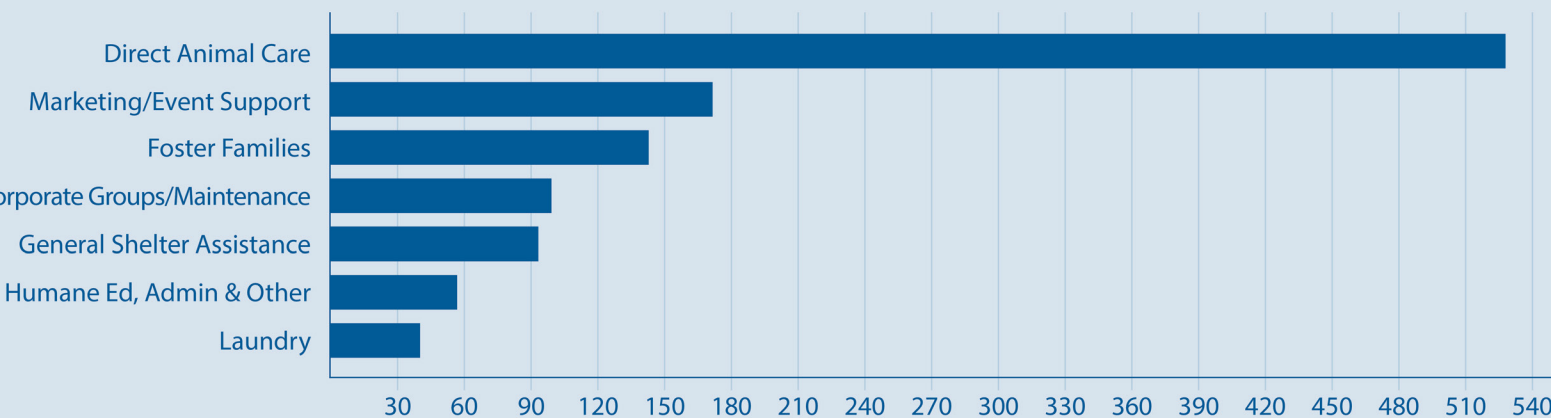
Compassion is taught. While humans are wired to have empathy and compassion, both qualities can be developed and enhanced, making humans better people. The New Hampshire SPCA has long believed in teaching children lessons of kindness, empathy and compassion for animals through our many Humane Education offerings. In recent years, we've been able to offer twice the number of camper opportunities, and the demand has kept up. While we are thrilled to have so many children and young teens learning and growing here, we began to wonder if our camps are adequately affordable

for all kiddos that want to participate. Attending camp is a luxury for many kids and we want to make our camps accessible to kids who want to be here. To that point, last year, we developed a formal process for offering camp scholarships for children in financial need. In the first year, eight children attended camp with at least a partial scholarship. Looking forward to Summer Camp 2025, we anticipate an even greater number. We are thrilled to offer accessibility to these fun and educational opportunities. Compassion is needed in the world today and we hope to teach it, one child at a time.

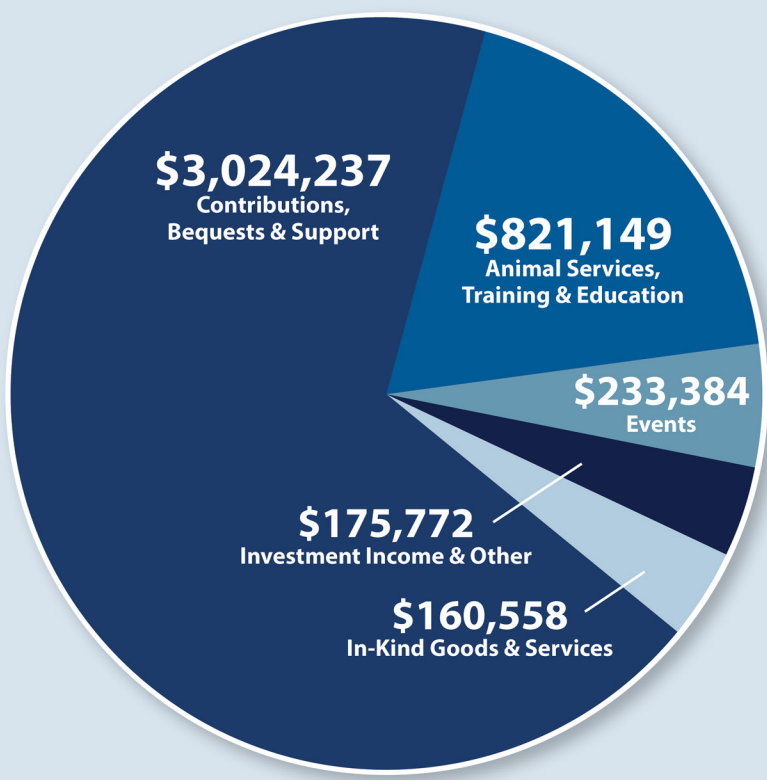
VOLUNTEER PROGRAM

FY24 FINANCIAL SUMMARY

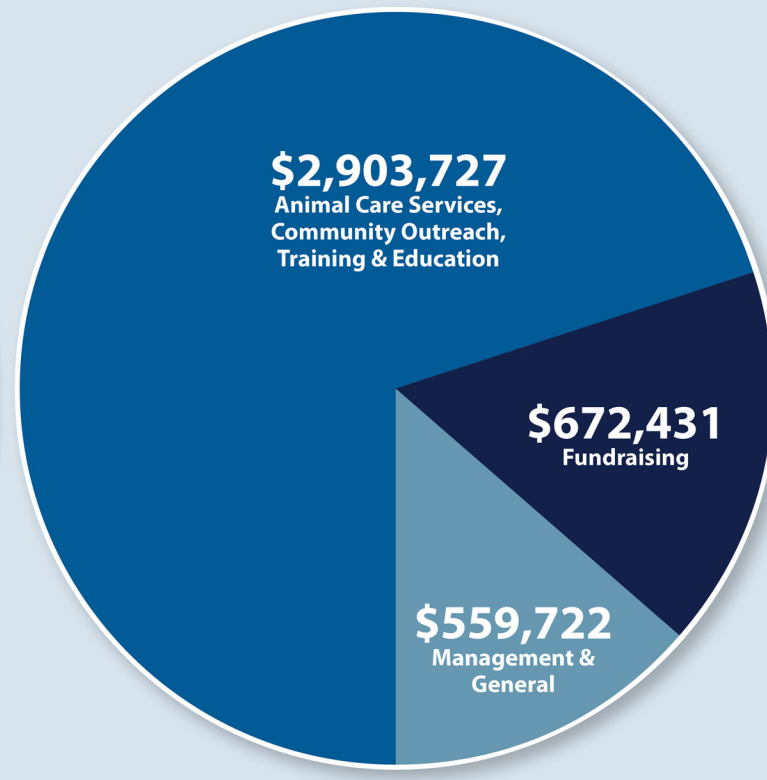
INDIVIDUALS DONATING THEIR TIME



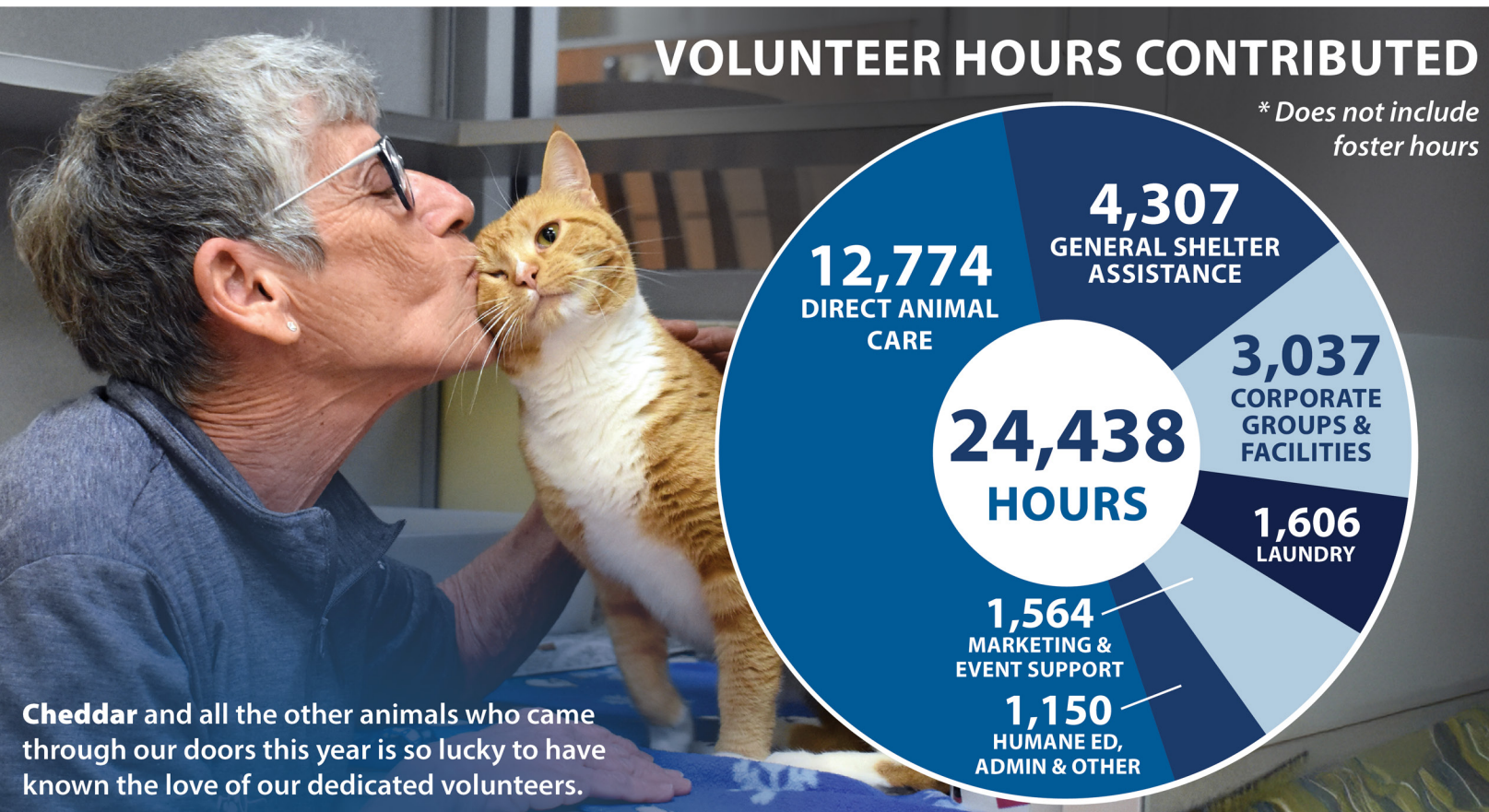
OPERATING INCOME



OPERATING EXPENSES



VOLUNTEER HOURS CONTRIBUTED



Cheddar and all the other animals who came through our doors this year is so lucky to have known the love of our dedicated volunteers.

A HEALTHY COMMITMENT

We are committed to providing necessary care to every animal in our care. While the needs of individual animals varies, here are approximate costs for services we do provide to our shelter animals on a regular basis:

DOGS & CATS

Service	Approx. Value
Dental (when applicable)	\$600-\$1,200
Food & care (for 14 days)	\$210
Spay/Neuter	\$135-\$450
Other procedures (as needed)	\$100-\$5,000
Behavior training (5-hour average)	\$100
Diagnostic	\$40-\$90
Microchip implant & registration	\$30
Heartworm test & preventative (dogs)	\$30
Flea & parasite prevention	\$15
Vet exam	\$35
Collar/leash or carrier	\$24
Identification tag	\$6

Average cost of the continuum of care is between:
\$480 - \$7,190

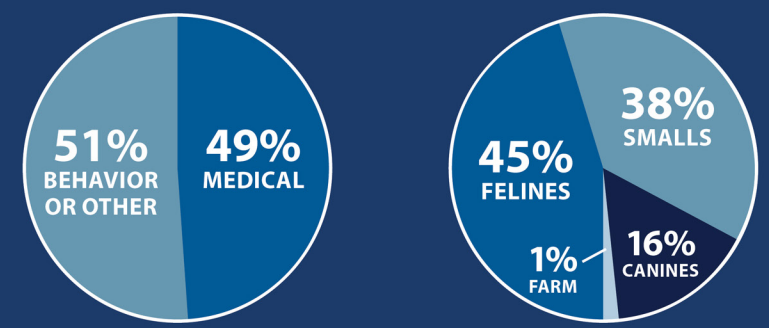
HORSES

Service	Approx. Value
Dental	\$300
Food & care (for 30 days)	\$1500
Farrier	\$50
Castration	\$800-\$2,200
Other procedures (as needed)	\$100-\$7,000
Behavior training (10-hour average)	\$500
Diagnostic	\$100-\$500
Microchip implant & registration	\$50
Updated vaccinations	\$150
Parasite prevention	\$50
Farm call/vet exam	\$175
Halter	\$25

Average cost of the continuum of care is between:
\$200 - \$12,500

FOSTER PROGRAM

675 ANIMALS
SPENT TIME WITH A LOVING FOSTER FAMILY DUE TO MEDICAL OR BEHAVIORAL NEEDS FOR
15,792 DAYS



REASON FOR FOSTER ANIMALS IN FOSTER

♥ [Click here to donate and support more homeless animals](#)

1872 Society

The **1872 Society** was developed as a way of recognizing and thanking our incredibly generous donors who are so important to the animals and our mission. The category names were chosen to further demonstrate that each plays a significant role. We sincerely appreciate each of you for your commitment to our work.

HERO — \$10,000+

Ms. Jennifer Armen
 ASPCA
 The Constance Family
 The Charles Engelhard Foundation
 Mr. Walter Cheney
 Mrs. Brenda Crawford
 Ms. Marcia Eaton
 Mr. Frank A. Furdyna
 Give With Liberty
 Dr. Peter A. Gray
 Mr. Thomas W. Haas and Ms. Karen Grover
 The Helen Smith Brosseau Charitable Fund
 Mr. Trevor James and Mrs. Courtney James
 Jim and Amy Lawson
 McGovern Subaru
 Murphy, Powers & Wilson Certified Public Accountants, P.C.

The Pattony Foundation
 Mr. Jeffrey L. Paulson
 Mr. Richard K. Parker Jr.
 Ms. Margaret J. Pilat-Roth
 Port City Veterinary Referral Hospital
 The Rutman Family Fund
 Crystal and Robert Span
 Tito's Handmade Vodka
 Veterinary Emergency & Surgery Hospital of Brentwood
 Mrs. Karen Walsh
 Ms. Karen Watkins
 Wentworth By The Sea Hotel and Spa
 The Wrenn Family
 Ms. Joan Zofnass

GUARDIAN — \$5,000+

AEMC Instruments
 American Eagle Outfitters
 Jane M. Arndt
 Dr. Donald F. Booth and Mrs. Susan S. Booth
 The Dan Brown Giving Fund
 Jim Casey
 Dr. Alison Cassotis and Dr. Nick Cassotis
 Ms. Linda Cloutier
 The Juliene J. Conway Charitable Fund
 Mrs. Ann Duschatko
 Mr. Michael Fecteau

Friends of Miami Animals
 Mr. Joseph Golter and Ms. Mary Pagucci
 The Horrigan Charitable Fund
 Mr. Peter Lennon and Ms. Susan Y. Desjardins
 The MacDonald Family Foundation
 Ms. Monica McCarthy
 Mr. Edward J. Mehigen
 Mr. Greg Miller
 Vance and Anne Morgan
 The Noah Foundation
 The Pegasus Charitable Fund

John C. Porter
 The Sandy Beach Fund
 Seascape Capital Management, LLC
 St. Mary's Bank
 Ms. Nancy E. Sullivan
 Three Bearings Fiduciary Advisors
 Ms. Carol Truchon
 The Wal-Mart Foundation
 Ms. Sherry Wyskiel

ALLY — \$2,500+

Anonymous
 The Adella and Alfred Giller Charitable Trust
 The Al-Husaini Fund
 Alternative Balance
 American Online Giving Foundation
 Audi of Stratham
 Dr. Christina Barnett, DVM
 The Barresi Fund
 The Bernitz/Silverman Family Fund
 F. Gordon and Diane Bitter
 Ms. Helen Brosseau
 Mr. and Mrs. Weston F. Cook, Jr.
 CoreMedical Group
 Gay G. Ehler
 Judith and Michael Fech
 The Flocco Family Charitable Fund

Debra Weiss Ford and Family
 The Fuller Foundation, Inc.
 Great Bay Orthodontics
 Mrs. Janice Greenfield and Mr. Mark O. Greenfield
 Pat Guter
 The Nyman Hinkamper Fund
 Ms. Deborah Holbrook
 Clayton Hunter
 The Kaytee Animal Foundation
 The Kornguth Charitable Fund
 Steven and Aviva List
 Daphne and David Lovely
 Dr. and Mrs. John MacGregor
 Mark and Diana McNabb
 Meredith Village Savings Bank
 Mr. Michael J. Murphy

Muttnation Foundation, Inc.
 Optima Dermatology Partners
 Mr. Nickolas Pappajohn and Mrs. Joanne Pappajohn
 Ms. Jennifer F. Roberts
 Mr. and Mrs. John J. Ruby, Jr.
 Rye Elementary School
 Mr. and Mrs. Robert Schoenberger
 Mr. and Mrs. Robert A. Sivret
 State Line Pet Supply
 Mr. Matthew Sturtevant, Sr.
 TD Bank
 The Viola-Swain Charitable Fund
 The Winner's Circle
 Ms. Linda J. Yost and Mr. Gary A. Yost
 Eden Zook

Saving lives, one gift at a time

At the New Hampshire SPCA, every act of kindness creates a ripple effect. Thanks to the generosity of our donors, we transform the lives of animals in need—providing shelter, medical care, and second chances to thousands each year.

Dolly's Second Chance: Eleven-year-old Dolly, pictured, arrived at the NHSPCA in early November scared and sad. Her lifelong person suffered a medical condition that prevented them from continuing to care for tiny Dolly. She struggled to adjust to the shelter environment, understandably, having lived her whole life as a beloved pet. Soon, however, we discovered that Dolly wasn't just trying to adjust, she was also in pain. Dolly had severe dental disease and could hardly eat. We scheduled her for



a dental procedure that resulted in 19 tooth extractions. Imagine 19 teeth in decay and how much that must have hurt. Fortunately, Dolly was able to recover from her dental surgery in the care of a wonderful foster mom who

doted on her and made sure she was comfortable and loved. With each passing day, Dolly felt better and soon her joyful spirit emerged. By Thanksgiving, Dolly found her forever home with a loving family who cherishes her every day. Her transformation—from a frightened, abandoned senior pup to a thriving, happy companion—was made possible by you.

Expanding Our Reach: This year, donor contributions have fueled significant advancements in our ability to rescue and rehabilitate animals. Our medical team performed over 16,000 veterinary treatments, and our adoption counselors placed 2,995 animals into safe and loving homes. Additionally, our humane education programs, supported by donor generosity, reached over 2,000 children—instilling values of compassion and responsible pet ownership for future generations.

Emergency Response & Community Support:

Beyond providing shelter and care, donor support enables us to act swiftly in times of crisis. When rescue operations bring neglected animals to our doors, we are able to respond immediately, providing essential medical care, food, and temporary housing. Because of your support, these animals can find a path to recovery and a brighter future.

Your generosity is more than a donation—it is a lifeline. Members of The 1872 Society, in partnership with every donor throughout the year, make all the difference to every animal that needs us. Together, we are saving lives, improving conditions and educating the next generation. **Thank you for being part of the NHSPCA family and for giving animals like Dolly a second chance at life.**

ADVOCATE — \$1,000+

Anonymous (4)
 Mr. Robert Abel
 Accurate Instrument Services
 ADP Employer Service
 Jennie Albee
 Allen Wayside Furniture
 Allied Clearwater
 Ralph E. Armstrong
 Mr. and Mrs. Wildolfo Arvelo
 The Aubuchon Foundation
 Carol Bailey
 Dorothy Baker
 Mr. and Mrs. Albert Barbour
 Ms. Frances Batchelder
 Mrs. Virginia Beckett
 Katrina and Erick Bell
 Ms. Joy Bergenthal
 Marjorie Berkey
 Ms. Yolanda Berkowitz
 Kathy and Steve Biedenbach
 Mr. Jon Bobbett
 Ms. Linda Boles
 Ms. Geri Bona
 Mr. Edward J. Bordeau
 Mrs. Alissa C. Bournival
 Attorney Mae C. Bradshaw
 Ms. Jill M. Bramblett
 Jacqueline and Roger Brown
 Mr. James D. Brown
 Mr. Steven M. Burke, Esq.
 Ms. Christina Burrows
 Ms. Shelle M. Butler
 Martha Byam
 Michael Casey
 The Catherine R. Judd Fund
 Ms. Brianna Chevalier
 Mr. and Mrs. David Choate
 Ms. Ruth Christopher
 Ms. Sonya Chuldenko
 Heather and Jonathan Clark
 Mr. and Mrs. Michael Cleary
 Coastal Fitness
 Mr. Philip E. Comstock Jr.
 Mr. James Conroy
 Mr. and Mrs. Gilbert Costa
 Andrea and Joseph Covati
 Cross Insurance
 Mrs. Michael Culbert and Mr. Peter Culbert
 Mr. Robert Culliford
 Cummings, Lamont & McNamee

Mr. and Mrs. James M. Curley
 The Dalissandro Family
 Michael and Cheryl Damour
 Mr. James Dan
 Doxia Dargaty
 The David Frankfurter and Anath Golomb Charitable Fund
 Dr. Patricia A. Day Lollini and Mr. Lance O. Lollini
 Hali Dearborn
 Ms. Elizabeth Ann Dennis
 Mr. and Ms. Jason DeRemer
 Tina L. Desfosses
 Ms. Amanda DiCicco
 Mr. Frank Doherty
 George Downer
 Dr. Richard Duffy and Tina Duffy
 The E+J David Charitable Gift Fund
 Mr. Nicholas Eaton
 Ms. Karen Edwards
 Ms. Ana Egana and Mr. William McCarthy
 Elevator Engineering, Inc.
 The Exeter Snow Hounds
 Devin and Thomas Farrelly
 Mrs. Barbara Fernane
 Mrs. Joann D. Fillmore
 Tom and Monique Fiola
 Richard Fitzpatrick
 Mrs. Sandra J. Follett and Mr. Robert I. Follett
 Ms. Ifen C. Foster
 Ms. Pamela J. Furbush and Mr. Richard N. Furbush
 Ms. Amy Gagnon
 Mr. Daniel B. Gallagher
 The Gardner Family Charitable Fund
 Kim and Josef Gazzola
 Mr. Thomas Glasrud
 Ms. Cecile D. Gleason
 Dr. and Mrs. Gregory M. Goodkin
 Bob Gouslin
 Ms. Julient Grant
 The Gove Group Real Estate
 Mr. Alan Grossberg
 Kinberly Haffner
 Dawn Hale
 Lenny and Joan Hall
 Ms. Pamela S. Hall
 Mr. Edmund R. Hannon and Mrs. Adrienne A. Morgan
 Carolyn and David Harney
 The Harris and Potter Giving Fund

Ms. Jo Haskell
 Gladys Hatchl
 Mr. Kevin M. Healey
 Ms. Diane R. Hill
 Liz G. Hilton
 Nan L. Hodgdon
 Jeanette and Charles Hood
 Christian S. Hosford
 Cheryl Howes
 Ellen Hoyt
 Ms. Marta Hurgin
 Mr. and Mrs. James J. Hurley, III
 Invisible Fence of Southern ME and Seacoast NH
 The DMKS Fund
 The Jay and Marilyn Sarles Charitable Fund
 Kevin Johnson and Frank McBourni
 James and Terri Johnston
 Bonnie Jones
 Mr. William M. Joyce and Mrs. Cynthia P. Joyce
 Ms. Katherine Kaplan
 Ms. Suzanne Kasprzak
 Mrs. Judith Keaney
 Heidi and Raymond Keefe
 Shawn Kelly
 Kennebunk Savings
 Mr. George M. Kester
 Mrs. Jo Ann Klatskin and Mr. William M. Klatskin
 Mr. Mark S. Klevanosky and Ms. Lynne Klevanosky
 Ms. Dawn Klinker
 Mr. Michael Knight
 Mr. Edward Kohlhase, Jr.
 Ms. Linda L. Kydd-Keeler
 Gayle and Dennis Lamm
 Mr. and Mrs. Eric A. LaMontagne
 Dr. Robert C. Lebold
 Tara Lenharth
 Ms. Elizabeth Lewis
 Mr. David M. Linden
 Dr. Gregory M. Lynch and Mrs. Ann S. Lynch
 The Lyon Giving Fund
 Andrew MacGregor
 Mr. Bruce L. MacIntyre
 Mr. Roderic D. MacKay
 Mr. M. Kevin MacLeod
 Ms. Mary Mahoney
 Tami Mallett
 The Eric Martin Family Fund
 Mr. Curtis Marston



Together, you make a difference!

There are 353 members of the 1872 Society (named for the year in which the New Hampshire SPCA was incorporated), each of whom has given \$1,000.00 or more in the previous year. In total these 353 individuals, foundations and businesses have given more than \$1,000,000! Incredible!

The NHSPCA and all that we accomplish is dependent on each of them, and each of the over 8,000 other active donors who annually contribute between \$1.00 and \$999.00. Thanks to your generosity, compassion and passion for animals, literally everything highlighted in this report is made possible, from cruelty prevention to adoption, humane education to training classes to veterinary care. Without you, we would not be able to achieve our mission every day.

We can never adequately express our gratitude to each of you except to state that we are truly grateful for every gift, every donor, every day.

Donna Martin
 Ms. Maureen P. Martin and Mr. Wayne A. Martin
 Fred and Karen Mason
 James C. Mayhew and Ellen K. Stone
 Mark and Virginia-Lee McCaddin
 Mrs. Dianne Cerasoulo and Mr. Michael Cerasoulo
 Mr. Joseph D. McEachern
 Marcia and Craig McLaughlin
 Mr. John McMahan
 Ms. Mary Lynn McPhie
 Mrs. Paula D. Merritt
 Microsoft Matching Gifts
 MINIs On Top
 Mr. Mark Moccia and Ms. Holly Moccia
 Ms. Joyce Moody and Mr. Denny M. Scruton
 Mr. James Mulroy and Mr. Christopher Keppelman
 Thomas and Carol Murphy
 Gary and Gayle Nangle
 New Franklin School
 Newburyport Bank
 Mrs. Denise M. Nies and Mr. Thomas A. Nies
 Ms. Donna Novelli, Ph.D.
 Ms. Carol Paczosa
 Karen Parnes
 Cindy Parran
 Duska A. Parsons
 Partners Bank
 Ann Parziale
 The Penates Foundation
 Mr. Philip S. Perham
 Petmedic Urgent Care
 Ms. Victoria Petrigni

Ellyn and Greg Phelps
 Jeff and Christine Polchlopek
 Project Bella Foundation
 Proulx Real Estate
 Cory Purchas
 Chris and Alison Pyott
 Donna O. Randle
 The Redfearn Hill Charity Fund
 Revision Energy
 Mr. Bill Richard
 Penny Richards
 Ms. Sharon M. Ring
 Mr. Charles Ristagno and Mrs. Marcia Ristagno
 Ms. Linda Rogers
 Ms. Mary J. Romano
 Mr. James R. Rosencrantz, Jr.
 Mr. Michael P. Rowe
 Ms. Ellen Saas
 Ralph Santosuosso
 Rhonda Sargent
 The Sayres FitzWillowBessie Fund
 Julia Schiff
 Ms. Mary-Ann Schmidt and Mr. Steven L. Schmidt
 William Sloan
 The Smoot Family Fund
 Ms. Sue E. Smulski
 Mr. Herbert Sneiderman and Mrs. Marilyn Sneiderman
 Ms. Karen Snow
 Ms. Lucinda Spaney
 Ms. Carolyn L. Spear
 Bitti Spears
 Mr. John Sullivan
 Mr. Thomas Sullivan and Mrs. Jayne Sullivan

Ms. Katherine Surman
 Karen and Daniel Swistak
 Take Five Dogcare LLC
 Amy Theobald
 Ms. Jody Thomas
 Doris and Arthur Timmins
 Susan and Jonathan Trace
 Mr. John Van Dalsum
 Ms. Veronica Van Loan
 Mr. Richard VanLandingham and Mrs. Joan VanLandingham
 The Vaughn M. Kailan and Patricia D. Kailan Fund
 The Vicki Ann Wallshein Charitable Trust
 Ms. Joanne D. Wallace
 Mr. Charles and Mrs. Lynne Walker
 Mr. William H. Walters
 The Webb Shaw Charitable Fund
 Mr. and Mrs. Ralph Weir
 Ms. Cheryl White
 Shaylee White
 Mr. Kevin A. Whitney and Mrs. Sandra L. Whitney
 Ms. CherylAnne Williams
 Alex Wilson
 Jeanne Witty
 Ms. Mara R. Witzling
 Ms. Lisa Wolford
 Mr. and Mrs. Joseph R. Wolfson
 Brandon Wood
 Cynthia Wyatt
 Mr. Art Young
 Mr. John M. Zanellis
 Adam Zlotnick
 Mrs. Rosemary A. Zurawel Jahnke and Mr. Lee S. Jahnke



**Thank you for
being a friend to
animals like me!**

The curious, lifesaving case of a kitten named Sprinkles

In late July, a stray cat and her six newborn kittens were brought to the New Hampshire SPCA after being found by a good Samaritan.

Right away, we knew one of the kittens was different from the others. While his siblings nursed with ease and grew stronger, one little guy was struggling.

At just a third of the size of his siblings, Sprinkles couldn't latch onto his mother to feed. After one day, he was placed with a foster family to be bottle-fed around the clock. Slowly but surely, he began to gain weight.

When he was returned to his family a week later, Sprinkles still couldn't nurse. It was clear he needed specialized care, so he was permanently separated from his litter and placed back in foster.

At four weeks old, a second challenge emerged: Sprinkles' front legs were bent



Sprinkles had to overcome much more than your average cat. He's now home and thriving thanks to your support.

at 90° angles with one paw twisted up, forcing him to walk on his elbows.

While we didn't know what the outcome would be, our compassionate veterinarians and medical team refused to give up on this little guy. Twice a week for three months, our team carefully wrapped Sprinkles' front legs with the hope that they'd straighten over time.

At four months old, we finally saw the results we were hoping for: Sprinkles' legs were corrected!

Once again, as one hurdle was cleared, our team was almost instantly greeted with another. Sprinkles began battling recurring fevers and respiratory issues. Weeks of bloodwork, x-rays, ultrasounds, antibiotics and supportive care followed.

After six long months of relentless treatments, Sprinkles was finally cleared for adoption!

His devoted foster family could not bear to part with him. In January, they signed his adoption papers and made it official, giving the once-fragile kitten the loving home he had fought so hard for.

Sprinkles is just one of the 3,878 animals who turned to the New Hampshire SPCA for a second chance in 2024. Learn about all the animals your support helped last year in this Impact Report!



♥ Click here to donate and support more homeless animals